



GO DUST FREE.

Replace your toolholder and eliminate dust, 100% Guaranteed.



Aerotech System®

Dust Free Nesting



PART NO:
AER-11F-HOLDER



DESIGN:

- » Hardened 58 HRC steel body
- » Award winning Centrifugal design with arched fan blades provides safe dust extraction without the risk of debris being 'thrown'
- » Proprietary HSK20C router bit connection
- » Shrinkfit and monoblock tool bodies provide unmatched tool rigidity and increased tool life
- » Proper mounting of tool requires tightening to the specified torque settings

APPLICATION:

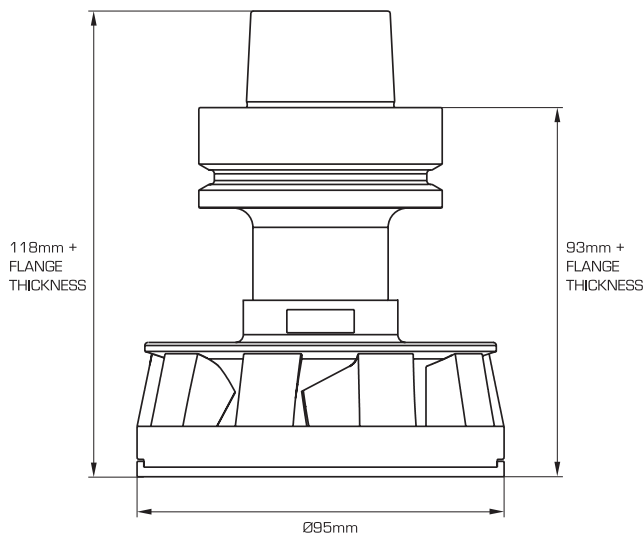
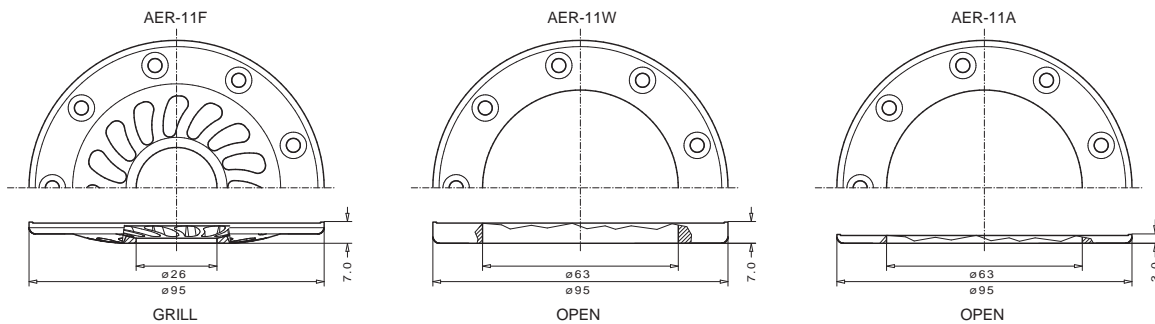
- » Reduce combustible environmental dust during routing operations
- » Increase production throughput by reducing or eliminating clean-up time between cuts and end of the shift
- » Longer tool life due to HSK20C connection's increased tool rigidity
- » Improved heat disipation provided by enhanced airflow within the cutting path

MATERIALS:

- » MDF
- » TFL and HPL Laminated panels
- » Plywood, OSB, and Veneered Panels (requires Flange Type: GRILL on Aerotech)
- » Composite materials: CFRP, Kevlar composites, Solid Surface, etc.

AEROTECH BODY

PART NO.	FLANGE TYPE	TYPE OF TOOLING	SPINDLE CONNECTION	LARGE DIAM.	ROUTER BIT CONNECTION	OVERALL LENGTH	FLANGE THICKNESS	TORQUE SETTING
AER-11A-HOLDER	OPEN	PCD only	HSK63F	95mm	HSK20C	125mm	3mm	25 Nm
AER-11F-HOLDER	GRILL	Carbide, PCD	HSK63F	95mm	HSK20C	125mm	7mm	25 Nm
AER-11W-HOLDER	OPEN	Carbide, PCD	HSK63F	95mm	HSK20C	125mm	7mm	25 Nm



AEROTECH HSK20 MOUNTING KIT

PART NO.	PART DESCRIPTION
AER-KIT-FP	AEROTECH HSK20C MOUNTING KIT INCLUDES: MOUNTING PLATE, BI-SCREW POSITIONER (DEPTH GAUGE), T-HANDLE 5MM HEX WRENCH



Aerotech System®

TYPE:
HIGH UPCUT**IMPORTANT:**

- » Dust (Chips) must remain moderately loose and unpacked in the cut to achieve optimal dust extraction
- » High Upcut design is recommended for maximum dust extraction

MATERIAL:

Excellent finish on:

- » Laminated panels
- » Chipboard

Good finish on:

- » Softwoods and Hardwoods
- » MDF
- » Plywood, OSB
(requires Aerotech Flange type: GRILL)

DESIGN:

- » Optimized for Aerotech System only
- » Router bits are shrinkfitted into reusable HSK20C holders
- » 2 precision ground cutting edges
- » Unmatched rigidity and near zero runout achieved by the shrinkfit connection
- » Excellent chipflow and lower heat retention is achieved by the semi-polished flutes
- » Increased cutting edge durability from special submicron, extended life carbide
- » 30° helix design with bottom cutting capability

APPLICATION:

- » For exceptionally smooth finishing cuts
- » Increased cutting edge life when frequently accelerating/decelerating or performing multiple passes
- » Eliminates chipping, fuzzing, and tear-out when the end of the upcut and downcut cutting edges are more than 1/16" from the top and bottom surfaces
- » When cutting rebates, dados, or pockets, use an upcut length that is at least 1/16" shorter than the shallowest cut
- » If part movement is a concern, use an upcut length of 0.200" or 5mm or shorter

HIGH UPCUT

PART NO.	CUTTING DIAM.	MAX. DEPTH OF CUT	UPCUT LENGTH MM	SHANK TYPE	NO. FLUTES
AF2059W-HUD2-12.9BH	3/8"	1/2"	9.5	HSK20C	2+2
AF2059W-HUD2-16BH	3/8"	5/8"	12.0	HSK20C	2+2
AF2059W-HUD2-19.25BH	3/8"	3/4"	14.5	HSK20C	2+2
AF2059W-HUD2-22.2BH	3/8"	7/8"	16.5	HSK20C	2+2
AF2059W-HUD2-25.6BH	3/8"	1"	19.0	HSK20C	2+2
AF2061-HUD2-12.9BH	1/2"	1/2"	8.0	HSK20C	2+2
AF2061-HUD2-16BH	1/2"	5/8"	10.0	HSK20C	2+2
AF2061-HUD2-19.25BH	1/2"	3/4"	12.0	HSK20C	2+2
AF2061-HUD2-22.2BH	1/2"	7/8"	14.0	HSK20C	2+2
AF2061-HUD2-25.6BH	1/2"	1"	16.0	HSK20C	2+2
AF2061-HUD2-31.95BH	1/2"	1-1/4"	20.0	HSK20C	2+2
AF2064-HUD2-19.25BH	5/8"	3/4"	12.0	HSK20C	2+2
AF2066-HUD2-19.25BH	3/4"	3/4"	12.0	HSK20C	2+2

MORTISE UPCUT

PART NO.	CUTTING DIAM.	MAX. DEPTH OF CUT	UPCUT LENGTH MM	SHANK TYPE	NO. FLUTES
AF2059W-UD2-12.9BH	3/8"	1/2"	5.0	HSK20C	2+2
AF2059W-UD2-16BH	3/8"	5/8"	5.0	HSK20C	2+2
AF2059W-UD2-19.25BH	3/8"	3/4"	5.0	HSK20C	2+2
AF2059W-UD2-22.2BH	3/8"	7/8"	5.0	HSK20C	2+2
AF2059W-UD2-25.6BH	3/8"	1"	5.0	HSK20C	2+2
AF2061-UD2-12.9BH	1/2"	1/2"	5.0	HSK20C	2+2
AF2061-UD2-16BH	1/2"	5/8"	5.0	HSK20C	2+2
AF2061-UD2-19.25BH	1/2"	3/4"	5.0	HSK20C	2+2
AF2061-UD2-22.2BH	1/2"	7/8"	5.0	HSK20C	2+2
AF2061-UD2-25.6BH	1/2"	1"	5.0	HSK20C	2+2
AF2061-UD2-31.95BH	1/2"	1-1/4"	5.0	HSK20C	2+2
AF2064-UD2-19.25BH	5/8"	3/4"	5.0	HSK20C	2+2
AF2066-UD2-19.25BH	3/4"	3/4"	5.0	HSK20C	2+2



Aerotech System®



TYPE:
HIGH UPCUT

DESIGN:

- » Optimized for Aerotech System only
- » Router bits are shrinkfitted into reusable HSK20C holders
- » 3 precision ground cutting edges
- » Unmatched rigidity and near zero runout achieved by the shrinkfit connection
- » Good chipflow and low heat retention is achieved by the three semi-polished flutes
- » Increased cutting edge durability from special submicron, extended life carbide
- » 30° helix design with bottom cutting capability

APPLICATION:

- » For exceptionally smooth finishing cuts
- » Reduced run-out in parting cuts as 2 cutting edges are engaged at all times
- » Increased number of bite marks per inch reduce chip size and provide a smooth finish, important when edge-banding without pre-miling
- » Eliminates chipping, fuzzing, and tear-out when the end of the upcut and downcut cutting edges are more than 1/16" from the top and bottom surfaces
- » When cutting rebates, dados, or pockets, use an upcut length that is at least 1/16" shorter than the shallowest cut
- » If part movement is a concern, use an upcut length of 0.200" or 5mm or shorter

IMPORTANT:

- » Dust [chips] must remain moderately loose and unpacked in the cut to achieve optimal dust extraction
- » High Upcut design is recommended for maximum dust extraction

MATERIAL:

Excellent finish on:

- » Laminated panels
- » Chipboard

Good finish on:

- » Softwoods and Hardwoods
 - » MDF
 - » Plywood, OSB
- (requires Aerotech flange Type: GRILL)

HIGH UPCUT

PART NO.	CUTTING DIAM.	MAX. DEPTH OF CUT	UPCUT LENGTH MM	SHANK TYPE	NO. FLUTES
AF2059A-HUD3-12.9BH	3/8"	1/2"	9.5	HSK20C	3+3
AF2059A-HUD3-16BH	3/8"	5/8"	12.0	HSK20C	3+3
AF2059A-HUD3-19.25BH	3/8"	3/4"	14.5	HSK20C	3+3
AF2059A-HUD3-22.2BH	3/8"	1"	19.0	HSK20C	3+3
AF2061-HUD3-12.9BH	1/2"	1/2"	8.0	HSK20C	3+3
AF2061-HUD3-16BH	1/2"	5/8"	10.0	HSK20C	3+3
AF2061-HUD3-19.25BH	1/2"	3/4"	12.0	HSK20C	3+3
AF2061-HUD3-25.6BH	1/2"	1"	16.0	HSK20C	3+3

MORTISE UPCUT

PART NO.	CUTTING DIAM.	MAX. DEPTH OF CUT	UPCUT LENGTH MM	SHANK TYPE	NO. FLUTES
AF2059A-UD3-12.9BH	3/8"	1/2"	5.0	HSK20C	3+3
AF2059A-UD3-16BH	3/8"	5/8"	5.0	HSK20C	3+3
AF2059A-UD3-19.25BH	3/8"	3/4"	5.0	HSK20C	3+3
AF2059A-UD3-25.6BH	3/8"	1"	5.0	HSK20C	3+3
AF2061-UD3-12.9BH	1/2"	1/2"	5.0	HSK20C	3+3
AF2061-UD3-16BH	1/2"	5/8"	5.0	HSK20C	3+3
AF2061-UD3-19.25BH	1/2"	3/4"	5.0	HSK20C	3+3
AF2061-UD3-25.6BH	1/2"	1"	5.0	HSK20C	3+3



PART NO:
AER-59F-HOLDER



PART NO:
AER-59W-HOLDER



DESIGN:

- » Extended Extraction Flanges provide even more extraction power
- » Hardened 58 HRC steel body reduces wear
- » Award winning Centrifugal design with arched fan blades provides safe dust extraction without the risk of debris being 'thrown'
- » Hydraulic clamping chamber provides exceptional clamping power and significantly reduced run-out
- » Universal clamping of standard cylindrical shank tools
- » 3/4" clamping diameter can be reduced with precision sleeves to accept smaller h6 shank diameters
- » Thermwood machines require a standard HSK63F toolholder gripper fork to be installed.
- » Proper clamping of tool shanks requires tightening to the specified torque settings

APPLICATION:

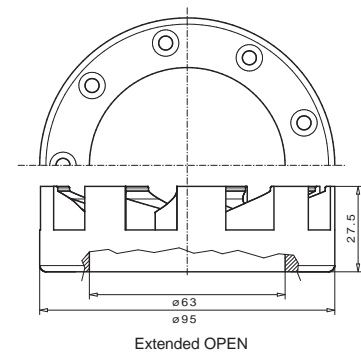
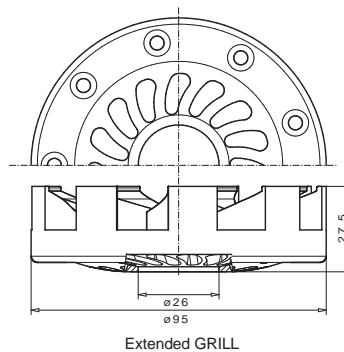
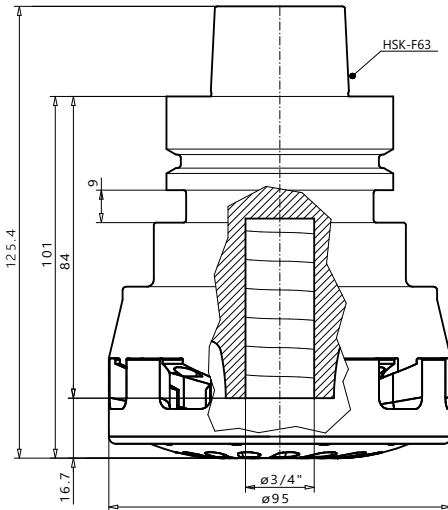
- » Reduce combustible environmental dust during routing operations
- » Increase production throughput by reducing or eliminating clean-up time between cuts and end of the shift
- » Fast tool changes
- » Longer tool life due to increased tool rigidity
- » Improved heat disipation provided by enhanced airflow within the cutting path

MATERIALS:

- » MDF
- » TFL and HPL Laminated panels
- » Plywood, OSB, and Veneered Panels (requires Flange Type: GRILL on Aerotech)
- » Composite materials: CFRP, Kevlar composites, Solid Surface, etc.

AEROTECH BODY

PART NO.	FLANGE TYPE	SPINDLE CONNECTION	LARGE DIAM.	CLAMPING DIAM.	OVERALL LENGTH	TORQUE SETTING
AER-59F-HOLDER	Extended GRILL	HSK63F	95mm	3/4"	125.4mm	10 Nm
AER-59W-HOLDER	Extended OPEN	HSK63F	95mm	3/4"	125.4mm	10 Nm



REPLACEMENT PARTS

PART NO.	DESCRIPTION
AER-TW-10NM	10 Nm Torque Wrench 5mm Hex Drive

REDUCTION SLEEVES

PART NO.	OUTSIDE DIAMETER	CLAMPING DIAM.	OVERALL LENGTH
AERC-RS3/4-1/8	3/4"	1/8"	50.5mm
AERC-RS3/4-1/4	3/4"	1/4"	50.5mm
AERC-RS3/4-3/8	3/4"	3/8"	50.5mm
AERC-RS3/4-1/2	3/4"	1/2"	50.5mm
AERC-RS3/4-5/8	3/4"	5/8"	50.5mm



PART NO:
AER-56F-HOLDER



Aerotech Universal®

DESIGN:

- » Hardened 58 HRC steel body reduces wear
- » Award winning Centrifugal design with arched fan blades provides safe dust extraction without the risk of debris being 'thrown'
- » Hydraulic clamping chamber provides exceptional clamping power and significantly reduced run-out
- » Universal clamping of standard cylindrical shank tools
- » 20mm clamping diameter can be reduced with precision sleeves to accept smaller h6 shank diameters
- » SK30 taper is usable on ISO30 and BT30 spindle type machines. Thermwood machines require a standard ISO30 toolholder gripper fork to be installed.
- » Proper clamping of tool shanks requires tightening to the specified torque settings

APPLICATION:

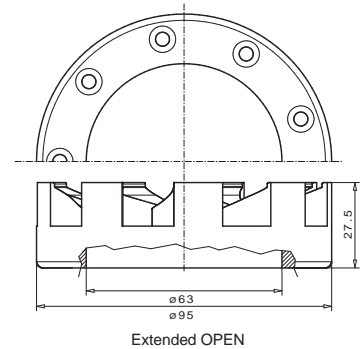
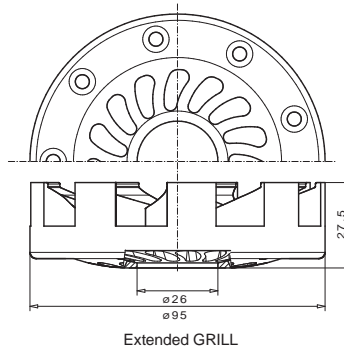
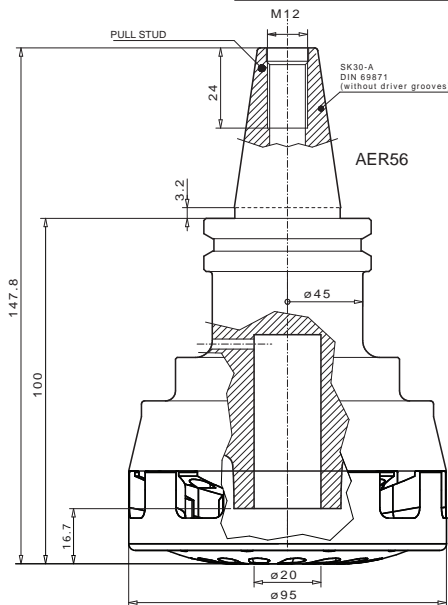
- » Reduce combustible environmental dust during routing operations
- » Increase production throughput by reducing or eliminating clean-up time between cuts and end of the shift
- » Fast tool changes
- » Longer tool life due to increased tool rigidity
- » Improved heat disipation provided by enhanced airflow within the cutting path

MATERIAL:

- » MDF
- » TFL and HPL Laminated panels
- » Plywood, OSB, and Veneered Panels (requires Flange Type: GRILL on Aerotech)
- » Composite materials: CFRP, Kevlar composites, Solid Surface, etc.

AEROTECH BODY

PART NO.	FLANGE TYPE	SPINDLE CONNECTION	LARGE DIAM.	CLAMPING DIAM.	OVERALL LENGTH	TORQUE SETTING
AER-56F-HOLDER	Extended GRILL	SK30 (ISO/BT)	95mm	20mm	125mm	10 Nm
AER-56W-HOLDER	Extended OPEN	SK30 (ISO/BT)	95mm	20mm	125mm	10 Nm



REPLACEMENT PARTS

PART NO.	DESCRIPTION
AER-TW-10NM	10 Nm Torque Wrench 4mm Hex Drive

REDUCTION SLEEVES

PART NO.	OUTSIDE DIAMETER	CLAMPING DIAM.	OVERALL LENGTH
AERC-RS20MM-3/8	20mm	3/8"	50.5mm
AERC-RS20MM-1/2	20mm	1/2"	50.5mm



Aerotech Universal®



TYPE:
HIGH UPCUT



TYPE:
MORTISE UPCUT

DESIGN:

- » Optimized for high-speed, dust-free cutting with the Aerotech Universal Hydro [see pages FC3, FC9]
- » 2 precision ground cutting edges
- » Excellent chipflow and lower heat retention is achieved by semi-polished flutes
- » Increased cutting edge durability from special submicron, extended life carbide
- » 30° helix design with bottom cutting capability

HIGH UPCUT

PART NO.	CUTTING DIAM.	MAX. DEPTH OF CUT	UPCUT LENGTH MM	SHANK DIAM.	OVERALL LENGTH	NO. FLUTES
RSF2059W-HUD2-12.9	3/8"	1/2"	9.5	3/8"	3"	2+2
RSF2059W-HUD2-16	3/8"	5/8"	12.0	3/8"	3"	2+2
RSF2059W-HUD2-19.25	3/8"	3/4"	14.5	3/8"	3"	2+2
RSF2059W-HUD2-22.2	3/8"	7/8"	16.5	3/8"	3"	2+2
RSF2059W-HUD2-25.6	3/8"	1"	19.0	3/8"	3"	2+2
RSF2061-HUD2-12.9	1/2"	1/2"	8.0	1/2"	3"	2+2
RSF2061-HUD2-16	1/2"	5/8"	10.0	1/2"	3"	2+2
RSF2061-HUD2-19.25	1/2"	3/4"	12.0	1/2"	3"	2+2
RSF2061-HUD2-22.2	1/2"	7/8"	14.0	1/2"	3"	2+2
RSF2061-HUD2-25.6	1/2"	1"	16.0	1/2"	3"	2+2
RSF2061-HUD2-31.95	1/2"	1-1/4"	20.0	1/2"	3-1/2"	2+2
RSF2061-HUD2-38.3	1/2"	1-1/2"	24.0	1/2"	3-1/2"	2+2
RSF2064-HUD2-19.25	5/8"	3/4"	12.0	5/8"	3"	2+2
RSF2066-HUD2-19.25	3/4"	3/4"	12.0	3/4"	3"	2+2

IMPORTANT:

- » Dust (chips) must remain moderately loose and unpacked in the cut to achieve optimal dust extraction
- » High Upcut design is recommended for maximum dust extraction

APPLICATION:

- » For exceptionally smooth finishing cuts
- » Increased cutting edge life when frequently accelerating/decelerating or performing multiple passes
- » Eliminates chipping, fuzzing, and tear-out when the end of the upcut and downcut cutting edges are more than 1/16" from the top and bottom surfaces
- » When cutting rebates, dados, or pockets, use an upcut length that is at least 1/16" shorter than the shallowest cut
- » If part movement is a concern, use an upcut length of 4.8mm (0.188") or shorter

MATERIAL:

Excellent finish on:

- » Laminated panels
- » Chipboard

Good finish on:

- » Softwoods and hardwoods
- » MDF
- » Plywood, OSB
(requires Aerotech Flange type: GRILL)

MORTISE UPCUT

PART NO.	CUTTING DIAM.	MAX. DEPTH OF CUT	UPCUT LENGTH MM	SHANK DIAM.	OVERALL LENGTH	NO. FLUTES
RSF2059W-UD2-12.9	3/8"	1/2"	4.8	3/8"	3"	2+2
RSF2059W-UD2-16	3/8"	5/8"	4.8	3/8"	3"	2+2
RSF2059W-UD2-19.25	3/8"	3/4"	4.8	3/8"	3"	2+2
RSF2059W-UD2-25.6	3/8"	1"	4.8	3/8"	3"	2+2
RSF2061-UD2-12.9	1/2"	1/2"	4.8	1/2"	3"	2+2
RSF2061-UD2-16	1/2"	5/8"	4.8	1/2"	3"	2+2
RSF2061-UD2-19.25	1/2"	3/4"	4.8	1/2"	3"	2+2
RSF2061-UD2-25.6	1/2"	1"	4.8	1/2"	3"	2+2
RSF2061-UD2-31.95	1/2"	1-1/4"	4.8	1/2"	3-1/2"	2+2
RSF2061-UD2-38.3	1/2"	1-1/2"	4.8	1/2"	3-1/2"	2+2
RSF2064-UD2-19.25	5/8"	3/4"	4.8	5/8"	3"	2+2
RSF2066-UD2-19.25	3/4"	3/4"	4.8	3/4"	3"	2+2



Aerotech Universal®



TYPE:
HIGH UPCUT



TYPE:
MORTISE UPCUT

DESIGN:

- » Optimized for high-speed, dust-free cutting with the Aerotech Universal Hydro [see pages FC3, FC9]
- » 3 precision ground cutting edges
- » Good chipflow and low heat retention is achieved by 3 semi-polished flutes
- » Increased cutting edge durability from special submicron, extended life carbide
- » 30° helix design with bottom cutting capability

HIGH UPCUT

PART NO.	CUTTING DIAM.	MAX. DEPTH OF CUT	UPCUT LENGTH MM	SHANK DIAM.	OVERALL LENGTH	NO. FLUTES
RSF2059A-HUD3-12.9	3/8"	1/2"	9.5	3/8"	3"	3+3
RSF2059A-HUD3-16	3/8"	5/8"	12.0	3/8"	3"	3+3
RSF2059A-HUD3-19.25	3/8"	3/4"	14.5	3/8"	3"	3+3
RSF2059A-HUD3-25.6	3/8"	1"	19.0	3/8"	3"	3+3
RSF2061-HUD3-12.9	1/2"	1/2"	8.0	1/2"	3"	3+3
RSF2061-HUD3-16	1/2"	5/8"	10.0	1/2"	3"	3+3
RSF2061-HUD3-19.25	1/2"	3/4"	12.0	1/2"	3"	3+3
RSF2061-HUD3-25.6	1/2"	1"	16.0	1/2"	3"	3+3

MORTISE UPCUT

PART NO.	CUTTING DIAM.	MAX. DEPTH OF CUT	UPCUT LENGTH MM	SHANK DIAM.	OVERALL LENGTH	NO. FLUTES
RSF2059A-UD3-12.9	3/8"	1/2"	4.8	3/8"	3"	3+3
RSF2059A-UD3-16	3/8"	5/8"	4.8	3/8"	3"	3+3
RSF2059A-UD3-19.25	3/8"	3/4"	4.8	3/8"	3"	3+3
RSF2059A-UD3-25.6	3/8"	1"	4.8	3/8"	3"	3+3
RSF2061-UD3-12.9	1/2"	1/2"	4.8	1/2"	3"	3+3
RSF2061-UD3-16	1/2"	5/8"	4.8	1/2"	3"	3+3
RSF2061-UD3-19.25	1/2"	3/4"	4.8	1/2"	3"	3+3
RSF2061-UD3-25.6	1/2"	1"	4.8	1/2"	3"	3+3

IMPORTANT:

- » Dust [chips] must remain moderately loose and unpacked in the cut to achieve optimal dust extraction
- » High Upcut design is recommended for maximum dust extraction

APPLICATION:

- » For exceptionally smooth finishing cuts
- » Reduced run-out in parting cuts as 2 cutting edges are engaged at all times
- » Increased number of bite marks per inch reduce chip size and provide a smooth finish, important when edge-banding without pre-miling
- » Eliminates chipping, fuzzing, and tear-out when the end of the upcut and downcut cutting edges are more than 1/16" from the top and bottom surfaces
- » When cutting rebates, dados, or pockets, use an upcut length that is at least 1/16" shorter than the shallowest cut
- » If part movement is a concern, use an upcut length of 4.8mm (0.188") or shorter

MATERIAL:

Excellent finish on:

- » Laminated panels
- » Chipboard

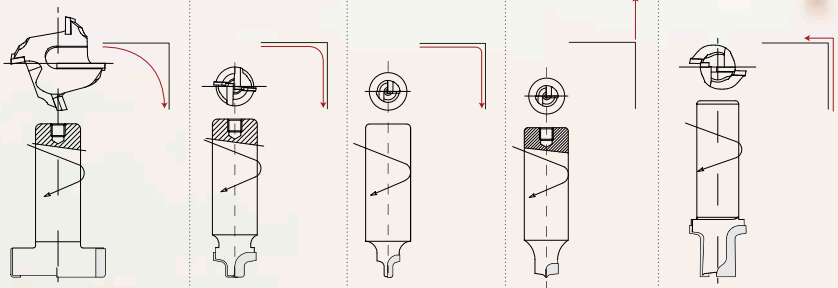
Good finish on:

- » Softwoods and hardwoods
 - » MDF
 - » Plywood, OSB
- (requires Aerotech Flange type: GRILL)



SHAKER

MDF DOOR TOOLING



SHAKER
Hogout

SHAKER
Inside Radius

SHAKER
Corner

SHAKER
Highlight

SHAKER
Cutout+Radius

- > Perfect-finish, one-piece MDF Shaker door
- > Increase your production throughput and eliminate sanding
- > 5-piece PCD Diamond tool set
- > Tools can also be purchased individually

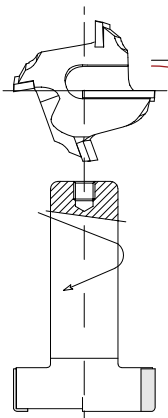


DESIGN:

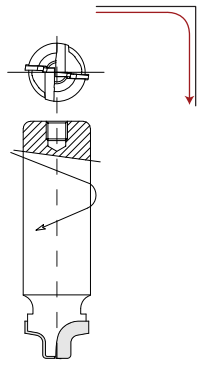
- » Resharpenable PCD cutting edges
- » Profiles are designed to blend seamlessly
- » Nickel plated to resist erosion of the cutter body
- » 5-piece PCD Diamond tool set
- » Tools sold individually

APPLICATION:

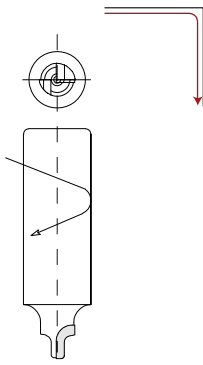
- » For producing perfect paint ready, one-piece MDF Shaker doors
- » Shaker - Hogout: Removes material from the pocket and leaves a smooth, clean surface
- » Shaker - Inside Radius: Removes material from the perimeter of the pocket
- » Shaker - Corner: Refines the inner corners of the pocket
- » Shaker - Highlight: Cuts the fine line that gives the appearance of a traditional 5-piece cabinet door
- » Shaker - Cutout + Radius: Cuts the overall outside shape of the door, leaving a clean outside edge with a small top radius



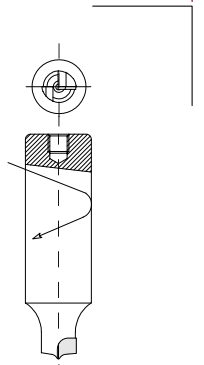
SHAKER - HOGOUT
PART NO. DRS01-D01



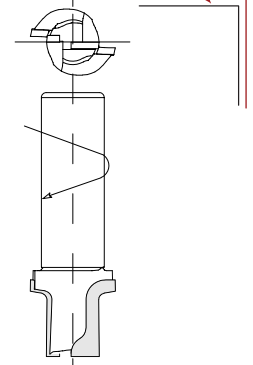
SHAKER - INSIDE RADIUS
PART NO. DRS01-D02



SHAKER - CORNER
PART NO. DRS01-D03



SHAKER - HIGHLIGHT
PART NO. DRS01-D04



SHAKER - CUTOUT + RADIUS
PART NO. DRS01-D05

PART NO.	DESCRIPTION	LARGE CUTTING DIAM.	SMALL CUTTING DIAM.	RADIUS MM	CUTTING DEPTH MM	SHANK DIAM. ød	NO. TEETH	OVERALL LENGTH
DRS01-D01	Hogout	40.0mm	-	-	8.5	3/4"	3+1	65mm
DRS01-D02	Inside Radius	18.0mm	8.0mm	2.0	6.5	3/4"	2	67mm
DRS01-D03	Corner	10.0mm	4.0mm	2.0	6.5	3/4"	1	65mm
DRS01-D04	Highlight	10.4mm	0.5mm	2.0	1.3	3/4"	1	65mm
DRS01-D05	Cutout + Radius	26.0mm	16.0mm	2.0	19.25	3/4"	2	80mm



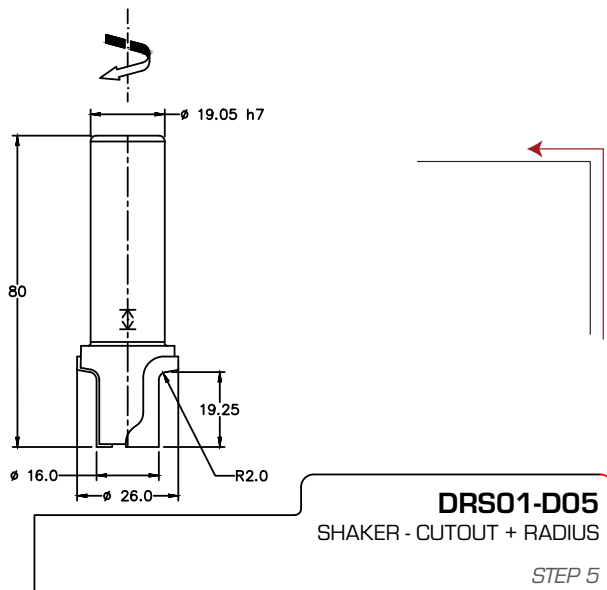
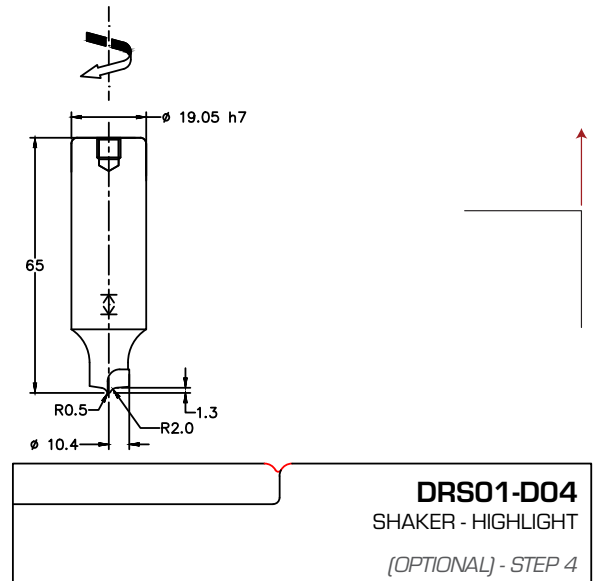
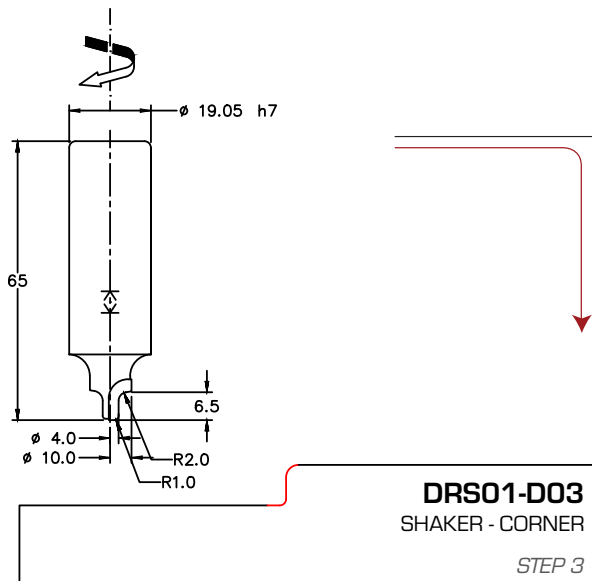
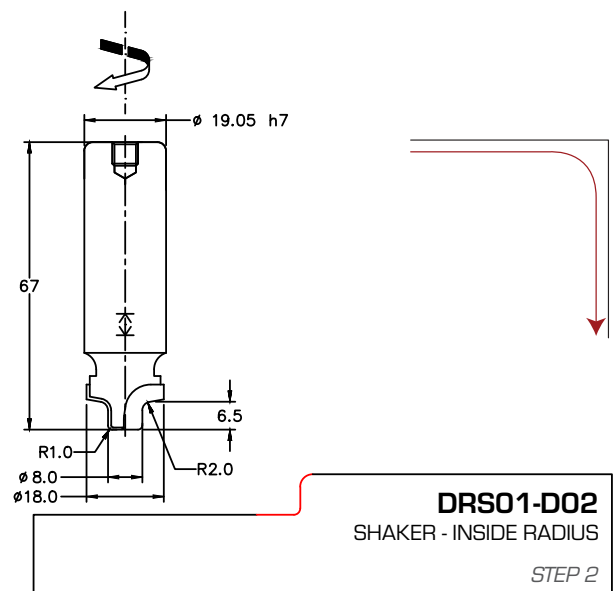
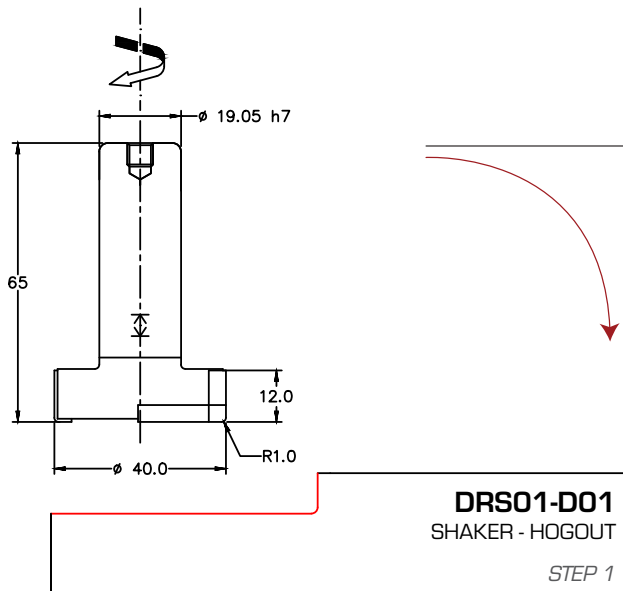
PART NO:
AER-59W-HOLDER



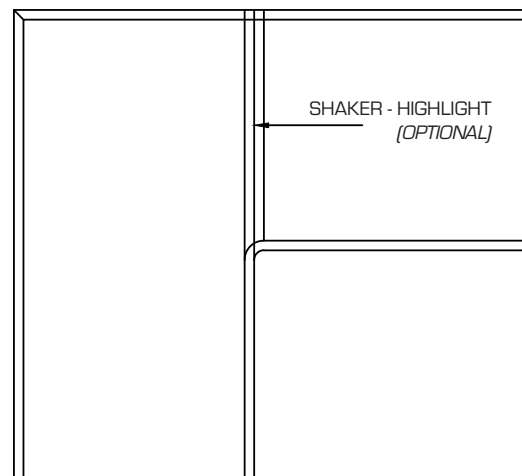
Aerotech Universal®

ENHANCED DUST EXTRACTION:

- » Use with the Aeroech Universal Hydro + extended fan with open mouth design for unparalleled dust extraction and cut quality
- » Enhanced dust removal reduces tool wear and re-cutting of dust, leaving parts clean and your work area ready for the next cycle
- » Use with DRS01-D01 and DRS01-D05 for exceptional dust extraction



CORNER OF MDF SHAKER DOOR



* Unit of measurements: Metric (mm)



Aerotech System®

GO DUST FREE.

Replace your toolholder and eliminate dust, 100% Guaranteed.

ENDORSED BY CNC MANUFACTURERS



Contact FS Cruing for application support and to purchase:
info@fscruing.com | Tel: +1 (905) 738-0145 | Toll-free: (800) 461-5319